

intec | colorcut

PRINTING SOLUTIONS

Flatbed digital die-cutting and creasing - for any shape!



-  FLATBED SYSTEM
-  OPTICAL SENSING
-  VACUUM TABLE
-  DUAL TOOLING
-  SOFTWARE INCLUDED



Dual tool flatbed cutter

Dual tool system cuts and creases in one compact unit

Cut direct from your desktop - on demand, any shape (no setup costs)

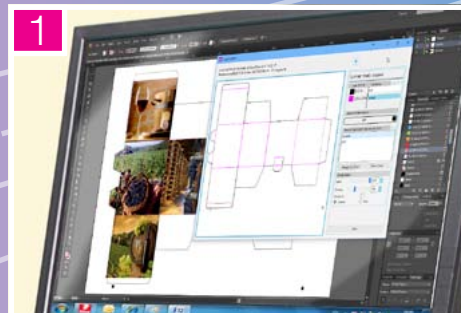
Optical registration accurately follows vector cut lines

Pneumatic vacuum suction of media

Contour cutter cuts thin films and card up to 450gsm / 600micron

Cuts typical Super Tabloid sheet in 30-60 seconds

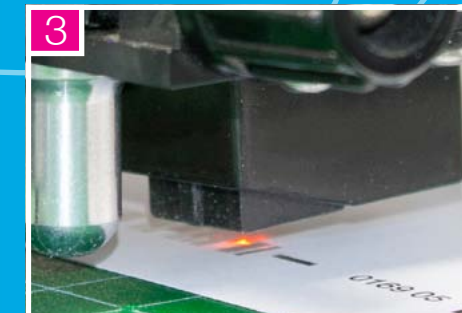
Ideal for small and medium-sized production and samples of packaging, swing tickets and even labels



ColorCut Pro - Intec's cut and crease control software



Vacuum suction system holds media during cutting



Optical mark recognition for accurate cutting



Easy-to-use control panel



Dual tools for cutting and creasing simultaneously



Crease and cut packaging and card products

Digitally cut and crease any shape on card, or cut labels - ideal for packaging pieces & swing tickets, point-of-sale and more!



Affordable digital sheet cutting

The Intec ColorCut Flatbed series of cutters, sets new standards in cost, flexibility and speed.

ColorCut Flatbed cutters deliver digitally cut; card, paper, synthetics and labels of any shape, direct from your desktop. The pneumatic vacuum hold-down table secures media in place, whilst the integrated optical sensing system provides accurate registration of media, ensuring crisp, accurate cut lines.

4 models to fit your needs

The Intec ColorCut Flatbed series consists of 4 models, the FB520, FB600, FB900 and FB1060. The ColorCut FB520 offers the most affordable entry into Flatbed cutting, the dual tool cutting system comes complete with a fixed 400W vacuum hold-down, and a maximum media area of 20.47" x 13.77" - plus an optional stand is available.

The popular ColorCut FB600 has an increased media area enabling larger digital sheets capable of accommodating folder templates in addition to packing, swing tickets and labels with maximum media area up to 23.62" x 17.71" ideal

for 2 or more sheets side by side, while the FB900 and FB1060, range-topping models, have incrementally larger cutting areas, enabling users to cut either larger sheets or to batch more sheets next to each other for increased productivity. The FB600, FB900 and FB1060 models include an advanced variable 750W vacuum system accommodating a wider range of substrates (even laminated sheets).

Versatile and fast, sheet fed packaging production

Targeted to at the light production sector, the Flatbed series cuts a typical Super Tabloid sheet in just 30 - 60 seconds. This enables users to easily produce anything from as little as 1 - or as many as 1,000 sheets per day.

No cutting dies required

Using advanced digital contour cutting technology, the Flatbed series follows artwork cut lines drawn in Adobe® Illustrator® or CorelDRAW® - which means there is no need to purchase and wait for traditional dies to be made. Digital cutting is an 'on-demand' process, simply click 'CUT' and the sheets are produced to any shape, instantly and directly from the desktop.

Two tools enhance productivity with folding lines as well as cut lines

The Flatbed series utilizes a dual tool cutting head. This enables both tools to operate independently for processes such as cutting and creasing, in one operation - reducing operation time and improving productivity.

Whilst the 'cut' tool makes the actual full-depth cuts, the 'crease' tool, creases all fold lines with its ball-bearing head, thus avoiding the exposure of paper fibres through printed areas.

Label production too...

The Flatbed series also performs perfectly for sheet label cutting - cutting absolutely any shape desired.

Ergonomic fit in your office

The FB600, FB900 and FB1060 models are supplied as standard with a stand, and an acoustic cover for the vacuum system enabling the unit to sit in your office or work area easily and comfortably.

So easy to use...

- 1 Intec's FB ColorCut Pro cutting software accepts both eps files from CorelDRAW and native Adobe Illustrator files.
- 2 The Flatbed series has a high-powered vacuum suction system which holds media in place, removing the risk of lifting during operation.
- 3 An optical sensor reads the special marks on your printed sheet to ensure accurate cutting. It also enables the Intec FB ColorCut Pro software to calculate any scale or skew issues and adjust the cut line accordingly.
- 4 The easy-to-use control panel allows users to easily adjust settings, such as direction, increased cutting force and even the vacuum system.
- 5 The dual tool cutting head enables a combination of tools to be used simultaneously such as a knife for cutting through the media and a roller ball for creasing - enabling an accurate folding line, without damaging the printed surface.
- 6 The finished product can be cut and creased in one smooth operation.



Flatbed cutters include a custom made stand (optional on the FB520 model)

Intec ColorCut Flatbed digital die cutter series

ColorCut Flatbed series	FB520	FB600	FB900	FB1060
POSITION				
Market position	Prototype and light production, on-demand packaging and sheet card cutting system – also suitable for sheet labels			
CUT AREA				
Maximum media area	13.77" x 20.47"	17.71" x 23.62"	24.40" x 36.61"	29.92" x 41.73"
Effective contour cutting area	12.99" x 19.21"	16.92" x 22.83"	23.62" x 35.43"	29.13" x 40.94"
Stand	Stand included	Stand included	Stand included	Stand included
Media hold-down method	400W Vacuum suction	750W Vacuum suction	750W Vacuum suction	750W Vacuum suction
Vacuum control	Fixed	5 level variable power	5 level variable power	5 level variable power
Acoustic cover for vacuum pump	No	Yes	Yes	Yes
Silencer	Optional	Included	Included	Included
CUTTING CONTROL				
Mountable tools	Dual tool functionality. 3 tools supplied as standard: Blade holder, creasing tool & pen tool			
Available tools	Blades:	Yellow - 1mm 30° cemented carbide blade - for thin film and very soft material		
		Red - 1mm 45° cemented carbide blade - for adhesive stickers, thin card under 0.25mm		
		Red - 1.4mm 45° circlip cemented carbide blade - for cutting media from 0.25 to 0.5mm thick		
		Blue - 1mm 60° cemented carbide blade - for thick media, sharply angled tip provides a longer cutting edge - suitable for cutting media from 0.5 to 1.5 mm thick (restricted by maximum limit of flatbed)		
		Blue - 1.4mm 60° circlip cemented carbide blade - for cutting high-intensity reflective film		
	Creasing tool:	≤500gsm cardboard, textured & corrugated paper		
	Pen holder:	Pen, plotting pen, also used for calibration sensor		
Cutting system	Contour knife cutting system, with up to 960gf delivered in 4g/step intervals through Intec ColorCut control panel			510gf delivered in 4g/step intervals
Mechanical resolution	0.01254mm	0.01254mm	0.01254mm	0.01254mm
Programmable resolution	HPGL 0.025mm	HPGL 0.025mm	HPGL 0.025mm	HPGL 0.025mm
Max cutting depth	0.60mm	0.60mm	0.60mm	0.60mm
Max cutting weights	Paper:	450gsm	450gsm	450gsm
	Other substrates:	Paper/card less than 450gsm, PVC - less than 0.4mm, PET - less than 0.3mm, magnetic sticker - less than 600 micron		
Max speed	23.62" / sec	23.62" / sec	23.62" / sec	23.62" / sec
SOFTWARE & CONNECTIVITY				
ColorCut Pro support	Yes (PC only)			
ColorCut Pro connectivity	Direct Plugin to: Adobe® Illustrator® (all versions), CorelDRAW® X3 - X8 (PC Only)			
File formats	ColorCut Pro is a plugin for Adobe® Illustrator® & CorelDRAW® (requires either app) and works with native CorelDRAW® or CorelDRAW® EPS files and native Adobe® Illustrator® files. (ColorCut Pro, cuts directly from Adobe® Illustrator® or CorelDRAW®)			
Optional software	SignMaster™ Pro (PC Only)			
	SignMaster™ is a stand-alone application for outline creation and will also import Adobe® Illustrator® PDF and EPS file formats and provides enhanced job barcoding functionality			
Connectivity	USB (1 connection to PC is required)			
REGISTRATION CONTROL				
Registration system	High resolution optical registration system which reads the registration marks on the media and compares the position with the original value from the digital file. The Intec ColorCut Pro software then acts accordingly to correct linear and angular positional differences by automatically adjusting the cut lines			
POWER REQUIREMENTS				
Voltages (cutter)	100V-240V auto switching	100V-240V auto switching		
Power (cutter)	200W, 3.0A	200W, 3.0A		
Voltages (vacuum pump)	110V or 220V (Voltage specific)			
Power (vacuum pump)	400W, 110V / 3.9A (vacuum)	750W, 110V / 10.8A (vacuum)		
	400W, 230V / 2.7A (vacuum)	750W, 230V / 4.5A (vacuum)		
Approvals	UL, c-UL certified. Complies with CE and RoHs directive, VCCI Class A, FCC Class A, EN55022 Class A			
GENERAL				
Weight (unpacked)	152 lbs	180 lbs	214 lbs	240 lbs
Dimensions (unpacked) L x W x H	29.92" x 30.23" x 11.77"	34.44" x 34.84" x 11.91"	43.22" x 42.91" x 43.11"	49.60" x 51.37" x 45.27"
Weight (crated)	225 lbs	275 lbs	351 lbs	364 lbs
Dimensions (crated) L x W x H	46.25" x 35.23" x 21.92"	54.60" x 39.64" x 22.12"	58.30" x 50.78" x 22.83"	62.20" x 55.51" x 23.22"